



2024 NSF RESEARCH INFRASTRUCTURE

WORKSHOP

MARCH 26 - 29, 2024 • TUCSON, ARIZONA

Image Credit: Vera C. Rubin Observatory, CTIO/NOIRLab/DOE/NSF/AURA T.A. R, Richard F. Caris Mirror Lab/Gabrielle Perez

PROJECT MANAGEMENT. FACILITIES AND OPERATIONS. AWARD MANAGEMENT. EHS. EDUCATION AND PUBLIC OUTREACH. CYBER (CI & CS).



U.S. National Science Foundation

RESEARCH INFRASTRUCTURE GUIDE (RIG)

OPERATIONS STAGE PLANNING

Charlotte Roehm, PhD., PMP

| Christopher Davis, PhD

croehm@nsf.gov

cdavis@nsf.gov

Mid-scale RIG Image Credit:
Ohio State University, Cornell
University, Georgia Tech Research
Corporation, Florida State University,
Woods Hole Oceanographic
Institution, The University of Kentucky
Research Foundation, Arizona State
University, NSF I-Corps Northeast
Hub, the University of Arkansas,
Georgia Institute of Technology, the
University of Michigan, University of
California-San Diego, and the
University of Tennessee, Knoxville



Session Outline

- Reminder of the current RIG Content and Structure
- Overview of identified gaps and opportunities
- Main objectives of Section 3.6
- Your feedback



Identified Gaps and Opportunities

WHY?

- Operations stage guidance for research infrastructure
- ✓ Flexible and scalable alignment

- Guidance for NSF PO & Awardees
- ✓ Increase clarity and consistent terminology

- Language on proposal preparation, facility evolution, & budget contingency planning
- ✓ Provide operational planning guidance

2 MAJOR FACILITY LIFE CYCLE AND MAJOR FACILITY OVERSIGHT.....	2.1-1
2.5 Operations Stage.....	2.5.1-1
2.5.1 Operations Management and Oversight	2.5.1-1
2.5.2 Renewal/Competition	2.5.2-1
2.6 Divestment Stage	2.6-1

3 FACILITY LIFE CYCLE MANAGEMENT PLANS FOR MAJOR FACILITIES	3.1-1
3.5 Operations Planning	3.5.1-1
3.5.1 Preparation of Proposals for Operations and Management.....	3.5.1-1
3.5.2 Procedures for Renewal or Competition of an Operating Major Facility.....	3.5.2-1

4 KEY MANAGEMENT PRINCIPLES AND REQUIREMENTS FOR MAJOR FACILITIES	4.1-1
4.2.6 Budget Contingency Planning during the Operations Stage	4.2.6-1



Current RIG Guidance Annual Work Plan

WHAT?



Annual Work Plan

The Annual Work Plan (AWP) describes what the facility expects to accomplish in the coming fiscal year. For many facilities, the AWP, annual operations proposal, and Cost Estimating Plan (per Sections 4.2.2 and 4.2.4) can be combined as one document, so long as all elements are addressed. The AWP should include a series of high-level performance goals (clear and agreed upon goals and objectives, performance metrics and, where appropriate, performance targets) for the coming year. The goals should include both scientific and operations issues (i.e., installation of new equipment or commissioning of new buildings, maintenance, Education and Oversight Training and ES&H). The goals and metrics will naturally vary from facility to facility and should be agreed upon between the Recipient and the NSF Program Officer (PO). The PO will review the AWP goals to ensure they are aligned with the long-term scientific objectives of the facility.

It is the Recipient's responsibility to manage and maintain the NSF-funded facilities, equipment, and instrumentation used in the conduct research regardless of ownership. See Section 6.6 of this Guide. In accordance with federal guidance¹ on property that the government owns, leases, or otherwise manages, Recipients should annually provide a brief discussion, cost estimate, and actual expenditures at a high level for the following:

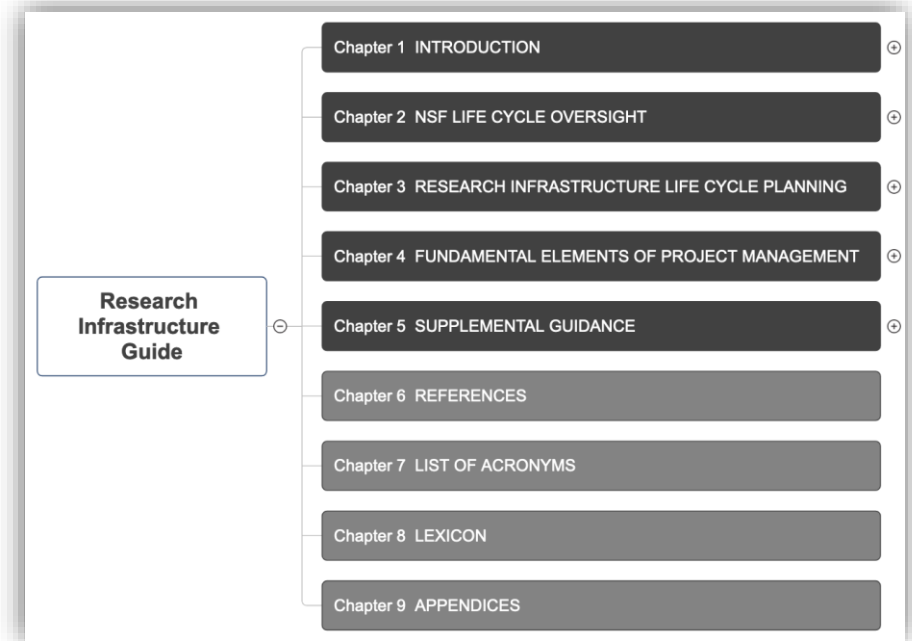
- Recurring routine maintenance and repair.
- Significant infrastructure changes, including modernization, overhaul, upgrade, replacement, and/or expansion for science facilities, equipment, utilities, and/or instrumentation.
- Utilities (including facility operation and purchase of energy)
- General support services (such as grounds and waste management).



Proposed Revisions to RIG Summary

WHAT?

- *Science Support Program* (SSP)
- Aligning approach to Annual Work Plans
- Components to be used as a guideline
- Non-prescriptive
- Tailor & scale to nature & complexity
- Consistency across programs





Proposed Revisions to RIG Reminders

No New Requirements

Award Instrument Neutral

No more than necessary to manage
the science support program

Tailoring, Scaling, and
Progressive Elaboration

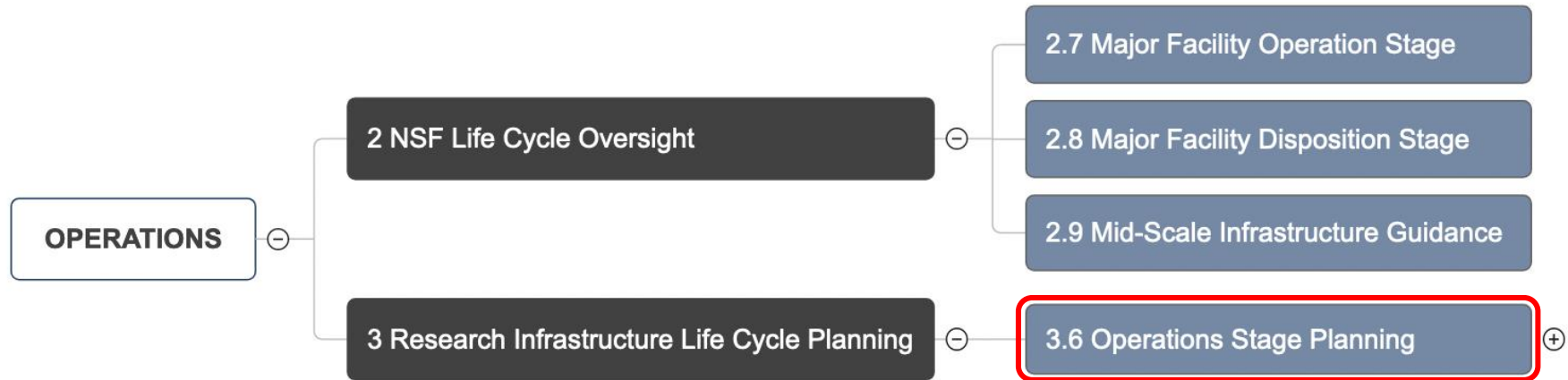


Proposed Revisions to RIG Section 3.6



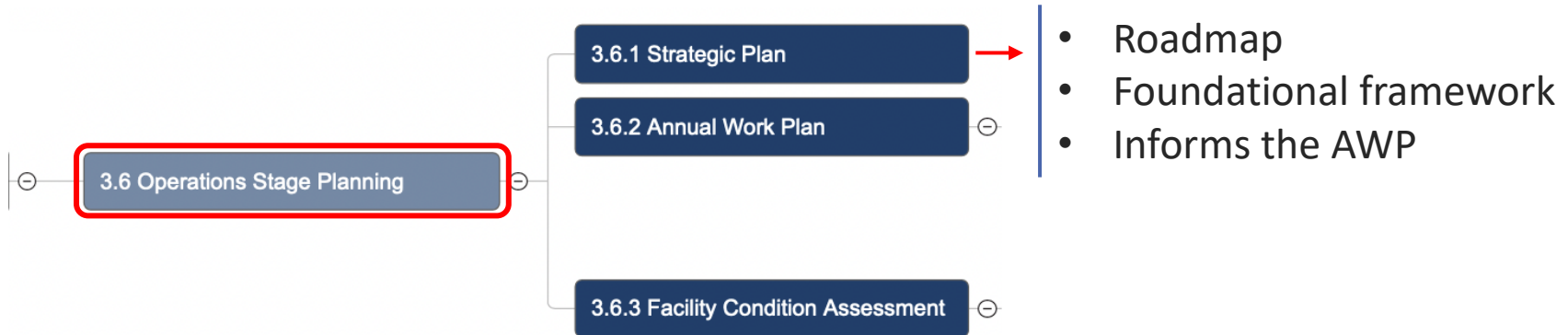


Proposed Revisions to RIG Section 3.6



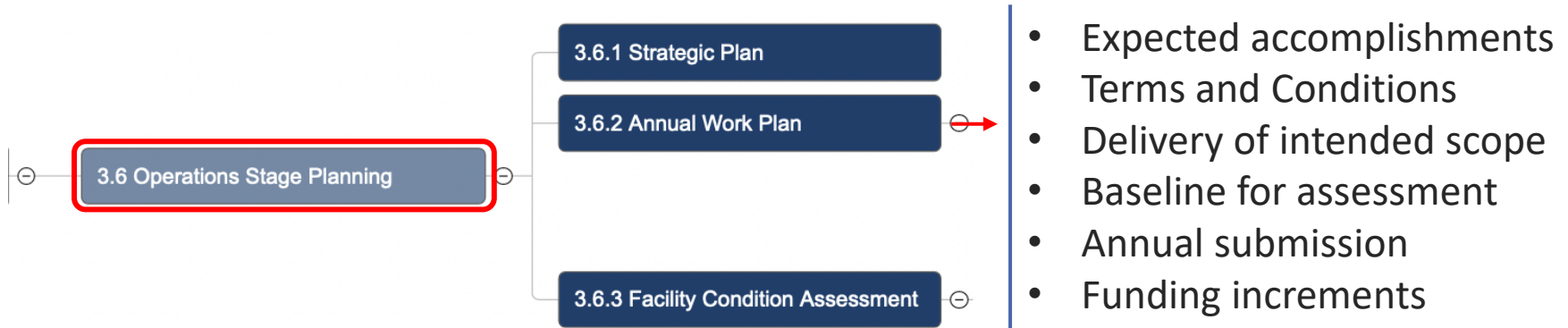


Proposed Revisions to RIG Section 3.6



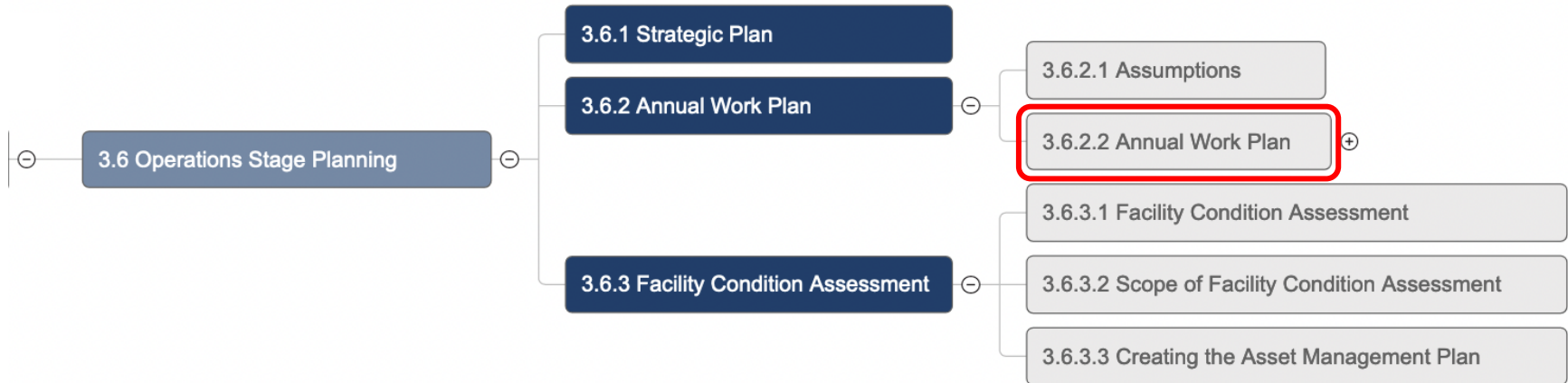


Proposed Revisions to RIG Section 3.6





Proposed Revisions to RIG Section 3.6





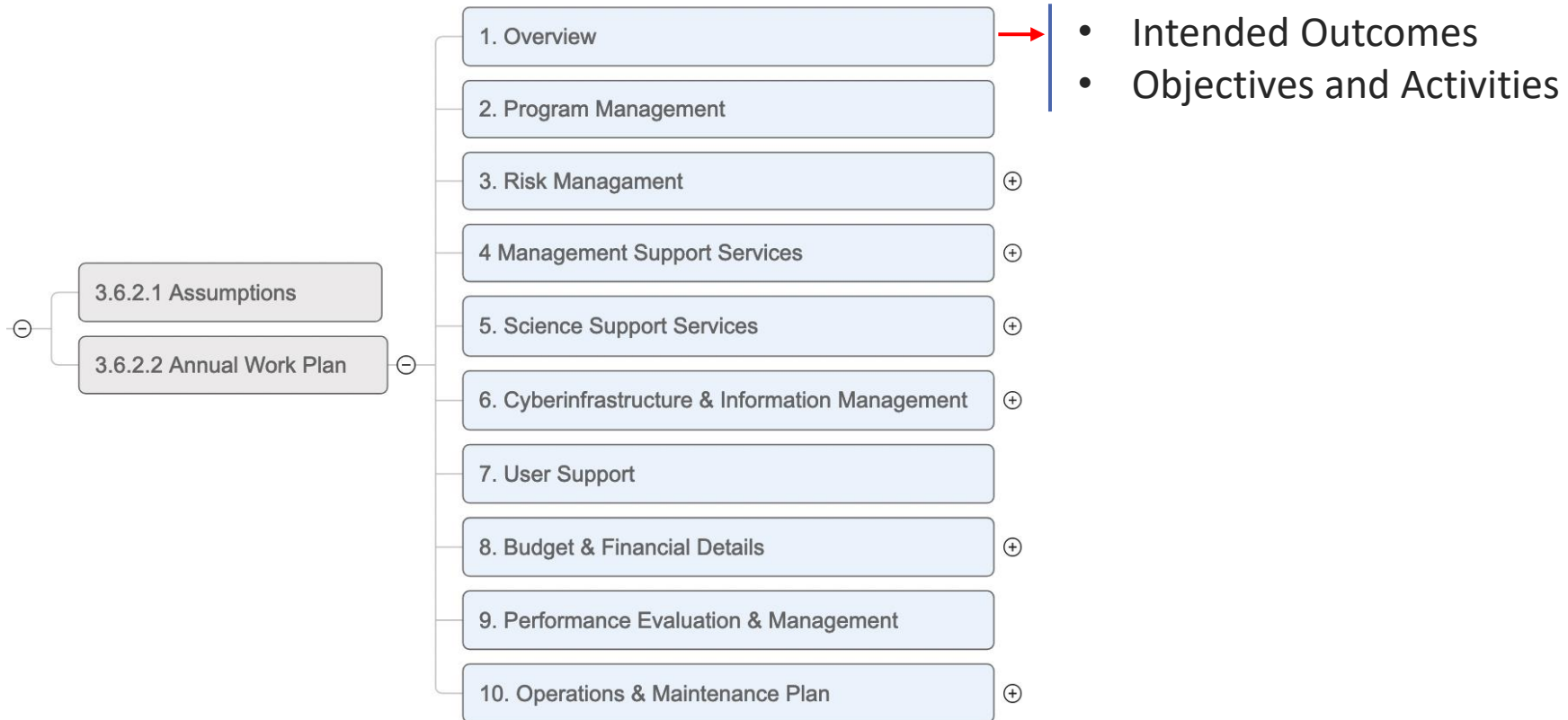
Proposed Revisions to RIG Section 3.6



- Structure and content
- Tailor and scale
- Solicitation and T&Cs

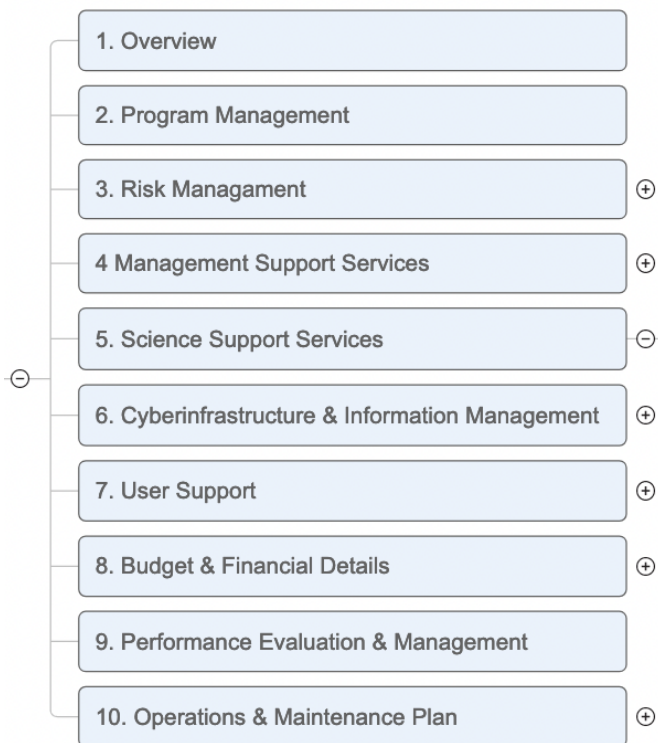


Proposed Revisions to RIG Section 3.6





Proposed Revisions to RIG Section 3.6



- Embedded science program
- Support services
- RI available to community



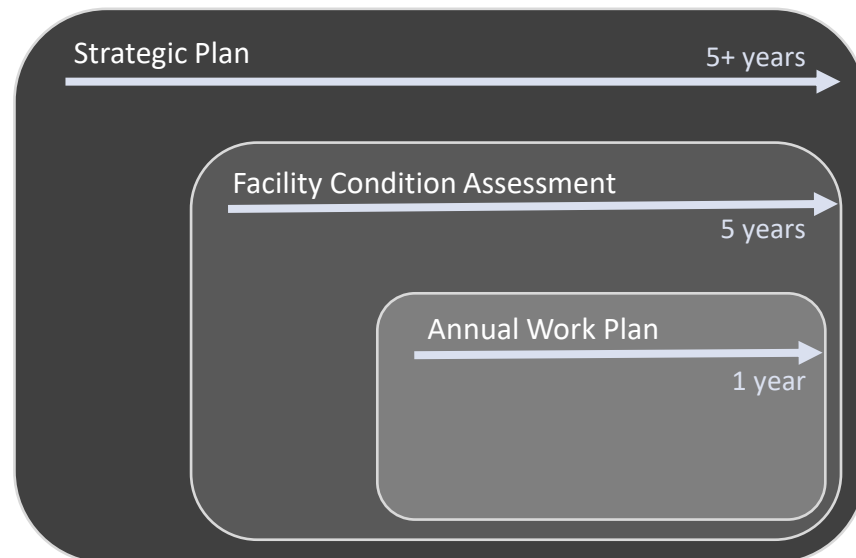
Proposed Revisions to RIG Section 3.6





Operations Stage Planning Summary

- Consistent guidance to Awardees
- Tailored and scaled to scope, type, complexity, and maturity
- Content and structure determined in collaboration with NSF PO
- Three primary components:
 - [Strategic Plan](#)
 - [Annual Work Plan](#)
 - Facility Condition Assessment





Operations Stage Planning Next Steps

What is not clear?

What key elements are missing?

What concerns do you have?



QUESTIONS?