

CREDIT: RUBIN
OBSERVATORY/NSF/AURA



2023 RESEARCH INFRASTRUCTURE WORKSHOP

UNOLS

UNIVERSITY-NATIONAL OCEANOGRAPHIC LABORATORY SYSTEM



PROJECT MANAGEMENT. FACILITIES AND OPERATIONS. AWARD MANAGEMENT. EHS. EDUCATION AND PUBLIC OUTREACH. CYBER (CI & CS).



What is UNOLS



University National Oceanographic Laboratory System

An organization of academic institutions (universities, National Labs, etc.) involved in oceanographic research joined for the purpose of coordinating ship schedules and research facilities.

www.unols.org



Why is UNOLS

CREDIT: RUBIN
OBSERVATORY/
NSF/AURA

- Investigators from non-operating institutions were struggling to get access to ship time.
- Federal Agencies were concerned over lack of coordination, increasing costs, differing modes of operations, lack of consistency between vessels receiving funding from the federal institutions.
- Operators were concerned over higher ship costs and increasing ship numbers
- No centralized ship scheduling or coordination
- UNOLS Charter officially adopted 1971
- Started with 17 Operating Institutions, 33 Ships with focus on
 - Ship Scheduling & Investigator Placement Procedures
 - Uniform cost accounting, cruise reporting, ship operations, data, safety
- Later, non-operating institutions were included as members
- Responsibilities increased and UNOLS became engaged in
 - Fleet replacement
 - Developing science mission requirements and concept designs for new ships

A narrative of the history of UNOLS is available [here](#). Especially the chapter entitled “Two Years of Turbulence Leading to a Quarter Century of Cooperation: The Birth of UNOLS”



UNOLS Vision Statement

CREDIT: RUBIN
OBSERVATORY/
NSF/AURA

A healthy and vigorous United States research and education program in the ocean sciences with broad access to the best possible mix of modern, capable and well operated research vessels, aircraft, submersibles and other major shared-use facilities.

- UNOLS today is a consortium of 58 U.S. institutions
- 14 operating institutions that operate:
 - 17 Research vessels
 - National Deep Submergence Facility
 - National Oceanographic Aircraft Facility
 - National Oceanographic Seismic Facility
- Facilities are either owned by one of the Federal agencies (NSF, ONR) or by individual institutions.
- Elected Council, 9 major committees and 2 sub-committees
- UNOLS Office



Pre-dates Large Facilities Office

CREDIT: RUBIN
OBSERVATORY/
NSF/AURA

Major Research Equipment and Facilities Construction created in 1995¹

Facilities Management & Oversight Guide July 31, 2003²

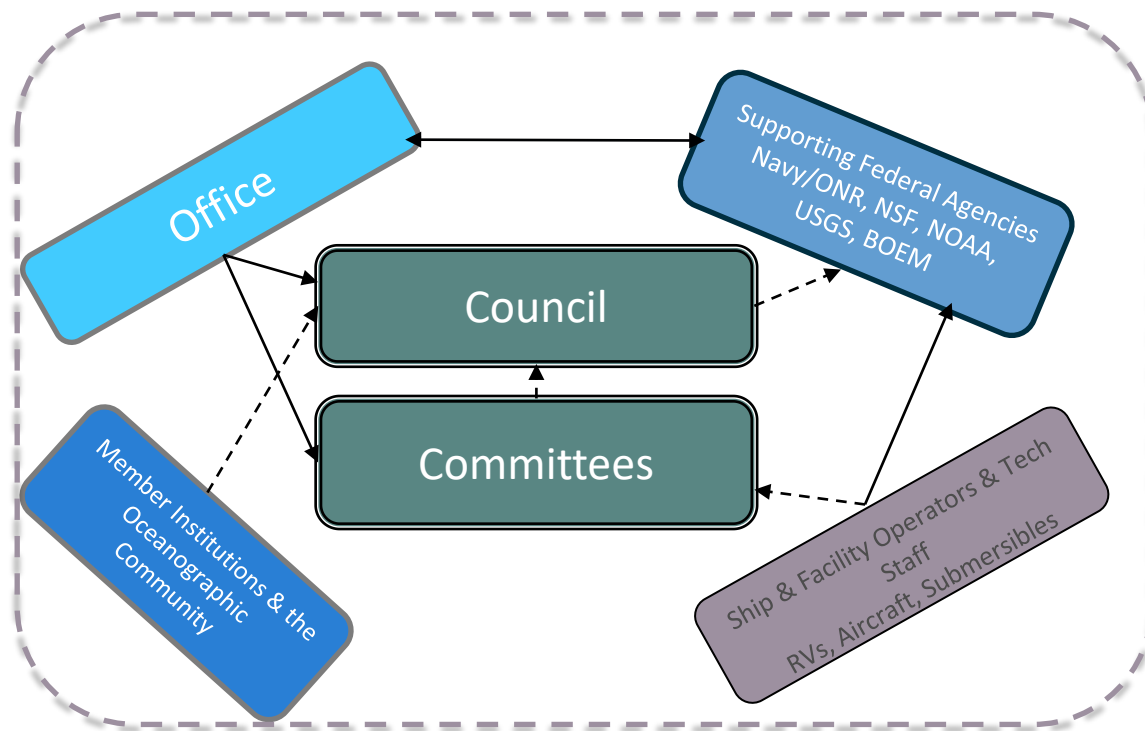
First Large Facilities Manual published in 2007³

- 1 Guidelines for Planning and Managing the Major Research Equipment and Facilities Construction (MREFC) Account, November 22, 2005
<https://www.nsf.gov/bfa/docs/mrefcguidelines1206.pdf>
- 2 Facilities Management & Oversight Guide, [NSF03049](#), July 31, 2003
- 3 Large Facilities Manual, [nsf0738](#) May 2007



UNOLS

CREDIT: RUBIN
OBSERVATORY/
NSF/AURA



www.unols.org



Committees

CREDIT: RUBIN
OBSERVATORY/
NSF/AURA

UNOLS Council

Ship Scheduling Committee (**SSC**)

RV Operators' Committee (**RVOC**)

RV Technical Enhancement Committee (**RVTEC**)

Fleet Improvement Committee (**FIC**)

Arctic Icebreaker Coordinating Committee (**AICC**)

Deep Submergence Science Committee (**DESSC**)

Scientific Committee for Oceanographic Aircraft Research (**SCOAR**)

Marine Seismic Research Oversight Committee (**MSROC**)

Maintaining an Environment of Respect at Sea (MERAS) Committee

Safety Committee

U.S. Coast Guard Polar Icebreakers (Healy, Polar Star)

Woods Hole Oceanographic Institution (WHOI) NDSF

Naval Postgraduate School (NPS) Twin Otter

*Ocean Bottom Seismometer Instrument Center -
Operations Sub-Committee*



Vessels

CREDIT: RUBIN
OBSERVATORY/
NSF/AURA

Global Class



Ocean/Intermediate Class



Regional Class



Local/Ocean Class



IN CONSTRUCTION



Outreach

CREDIT: RUBIN
OBSERVATORY/
NSF/AURA

- STEMSEAS – Undergraduates
 - Researchers
 - Utilizes vessel transits to get students to sea
- MATE - Marine Advanced Technology Education
 - Marine Technicians
 - Recruits from Community colleges and landlocked Universities
 - Internships with marine technicians aboard research vessels
- Chief Scientist Training Cruises
- DeSSC New User Program
- Cruises of Opportunity
 - Graduate volunteers participate aboard cruises with open berths
- UNOLS Newsletter and Social Media



Take Home Message

CREDIT: RUBIN
OBSERVATORY/
NSF/AURA

UNOLS is a community, composed of volunteers

Influence the future of marine research in the U.S. Academic Research Fleet by joining a committee, becoming a representative, and staying apprised of news.

Join our mailing lists here: <https://www.unols.org/form/contact-us-form>



@UNOLS



@UNOLS



@UNOLS_org