

High Magnetic Field X-Ray Facility

A partnership between **CHESS**, the **MagLab**, and the **University of Puerto Rico**

Project Year 1 DMR - 1946998/Brock



HMF technical crew test fitting a new accelerator dipole vacuum chamber. Photo: Leila Abubahr

NSF MAGLAB Cornell University

520.1 Project: HMF Beamline Construction	
Project Director (PI)	J. Brock
Deputy PI (Co-PI, X-ray Science)	B. Brock
Deputy PI (Co-PI, Magnet Science)	E. Palm
Deputy PI (Co-PI, Education)	J. L. Colton
Project Scientists	J. Ruff, L. Debevoise, B. Ranshaw
Project Finance, Administration	K. Jacoby, J. Ronow, C. Rice
Safety Director, Safety Manager	J. Shanks, R. Lochner
Project Manager, Safety Review Team	E. Comrie, E. Bonbrink
Facility Engineer	R. Gallagher
Mechanical Eng/Fab Manager	T. O'Connell

520.2 CESR Tunnel Mods	520.3 HMF Beamline	520.4 Experimental Equipment
L2 Manager: J. Codnar	L2 Manager: C. Conolly	L2 Manager: R. Ruff
520.2.4 Insertion Devices	520.3.4 Front End, Apertures	520.4.3 Science Method Tests
LIM: A. B. Tennahy, L. Lyndaker	LIM: L. Lyndaker	LIM: L. Debevoise
520.2.5 Vacuum/Beampipes	520.3.5 Enclosures/Shielding	520.4.4 Magnet/Cryogenics
LIM: M. D. Spurrin	LIM: M. D. Spurrin	LIM: M. D. Spurrin
520.2.6 Shielding/Layout	520.3.6 Instrumentation/Controls	520.4.5 Diffractioner
LIM: D. Spragg	LIM: E. Edwards	LIM: A. Pauling
520.2.7 Instrumentation/Controls	520.3.7 X-ray Hard-loaded Optics	520.4.6 Custom X-ray Optics
LIM: J. Barley, M. Forster	LIM: A. Pauling	LIM: Lyndaker
520.2.8 CESR Mechanical Systems	520.3.8 HMF Mechanical Systems	520.4.7 Detectors/Sensors
LIM: L. Abubahr	LIM: L. Abubahr	LIM: J. Ruff
520.2.9 CESR Utilities/Electrical	520.3.9 HMF Utilities/Electrical	520.4.8 Computing/Controls
LIM: L. Miller	LIM: L. Miller	LIM: L. Miller
520.2.10 CESR Tunnel Cryogenics	520.3.10 HMF Beamline Cryogenics	520.4.9 Combing/Controls
LIM: D. Sabol	LIM: D. Sabol	LIM: J. Ruff

The HMF PEP as a structure document, built on a platform of MS Project/Excel/Word*,**

Ernie Fontes, Joel Brock



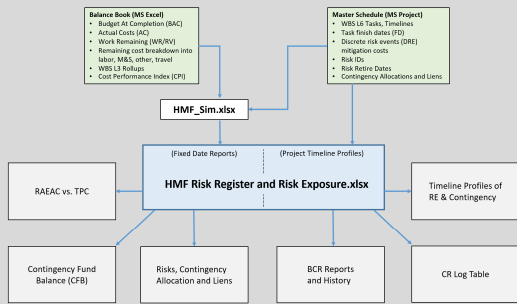
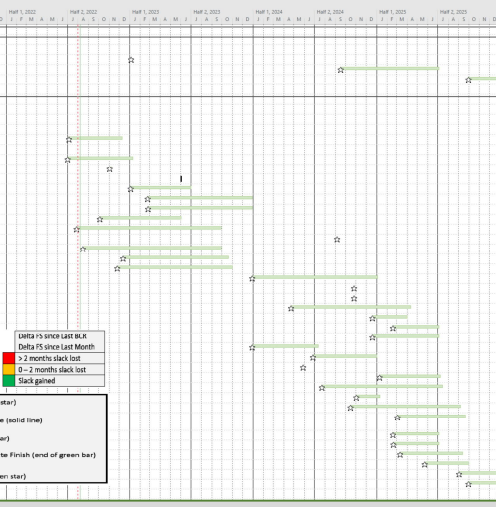
*with also KFS Oracle Database and home-built Timesheet hour log

**Note: figures captions intentionally left off as a test for PMs and NSF POs

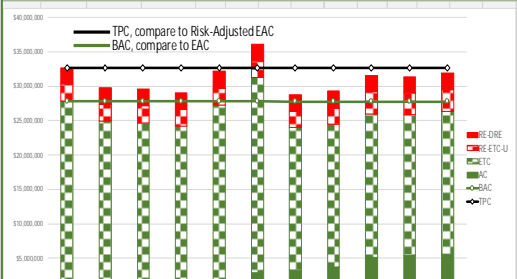
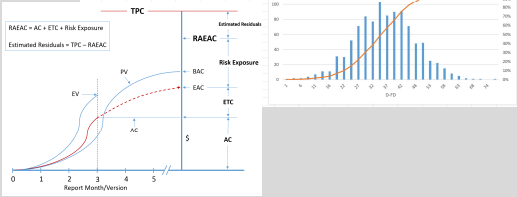
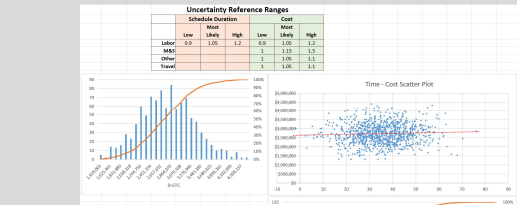
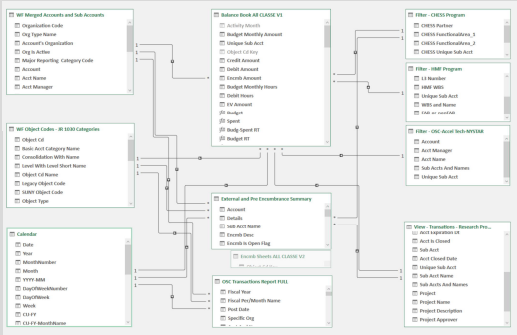
Project Execution Plan for the HMF Beamline Construction Project

TABLE OF CONTENTS

- 1 INTRODUCTION 11
 - 1.1 Scientific Objectives 11
 - 1.2 Scientific Requirements and Integration into Existing Facility Infrastructure 12
 - 1.3 Transition to Operations Planning (replaces Devtment Plan) 14
- 2 ORGANIZATION 15
 - 2.1 Internal Governance and Organization and Communication 15
 - 2.2 External Organization, Partnerships and Communication 16
 - 2.3 Roles and Responsibilities 17
- 3 CONSTRUCTION PROJECT DEFINITION 21
 - 3.1 Summary of Total Project Definition 21
 - 3.2 Work Breakdown Structure (WBS) 26
 - 3.3 WBS Dictionary 26
 - 3.4 Scope Management Plan and Scope Contingency 31
 - 3.5 Baseline Budget and Budget Contingency 36
 - 3.6 Funding Profile 41
 - 3.7 Schedule Baseline 42
 - 3.8 Schedule Contingency 43
- 4 RISK AND OPPORTUNITY MANAGEMENT 46
 - 4.1 Risk Management: Overview, Changes in this revision 46
 - 4.2 Risk Management Process 46
 - 4.3 Risk Register 46
 - 4.4 Contingency Management Plan 66
- 5 CONFIGURATION CONTROL 78
 - 5.1 Configuration Control Plan 78
 - 5.2 Change Control Plan 79
 - 5.3 Document Control Plan 80
- 6 ACQUISITIONS 81
 - 6.1 Acquisition Process 81
 - 6.2 Acquisition Approval Process 82
- 7 PROJECT MANAGEMENT CONTROLS 82
 - 7.1 Performance Measurement and Project Management Process 82
 - 7.2 Earned Value Management System (EVMS) 85
 - 7.3 Financial and Business Controls 87
- 8 CYBER-INFRASTRUCTURE 88
 - 8.1 Cybersecurity Plan 88
 - 8.2 Code Development Plan 88
 - 8.3 Data Management Plan 88
- 9 INTEGRATION AND COMMISSIONING 89
 - 9.1 Integration and Commissioning Plan 89
 - 9.2 Acceptance / Operational Readiness Plan 95



- ### APPENDICES
- A PEP Appendix A - Revision 6 - Master Schedule GANTT 6
 - B PEP Appendix B - Revision 3 - Cost Book Sheets 6
 - C PEP Appendix C - Revision 1 - Vendor Quotes 6
 - D PEP Appendix D - Full Documentation 6
 - E PEP Appendix E - Revision 1 - Risk Register and Analysis 6
 - F Glossary of Terms (attached)
 - G Example of Change Request Form CR-008 (attached)
 - H Example of HMF Monthly Report (attached)
 - I Example of HMF Risk Analysis Report (attached)
 - J HMF BABA Compliance Plan - June 2022 (attached)
- ### List of Figures
- Figure 1: Organization and Work Breakdown Structure (OBS and WBS) 15
 - Figure 2: Schedule of Major Project Phases (GANTT) 23
 - Figure 3: HMF Project L1, L2 Milestones and schedule contingency (GANTT) 24
 - Figure 4: External constraints to the HMF project schedule (GANTT) 25
 - Figure 5: Change Request Log table which also tracks Schedule Contingency 46
 - Figure 6: Overview of risk management process from figure 6.2-4.1 in RIG (NSF 21-107) 45
 - Figure 7: Excerpt from Safety Review document showing risk and hazard identification and controls 47
 - Figure 8: Schedule contingency "heads-up" display for L1 Milestones 52
 - Figure 9: EV and Risk-Adjusted Estimate At Completion (RAEC) 54
 - Figure 10: RAEC vs. TPC Report History 54
 - Figure 11: Monte Carlo simulation results for HMF cost-schedule model 55
 - Figure 12: Risk Register summary of risk exposure and contingency mitigations items tracked 68
 - Figure 13: Contingency View table from the Master Schedule 69
 - Figure 14: BAC History table, tracking differences across multiple Change Request actions 71
 - Figure 15: Risk Exposure profiling, including a time-phase plot of actual allocations and expected items 72
 - Figure 16: Contingency List example and Contingency - defined at award 74
 - Figure 17: Technical Design Document (TDD) draft table of contents 78
 - Figure 18: Project Control System for HMF Beamlines construction 83
 - Figure 19: Data sources and data flow for Risk Exposure tracking and modeling 84
 - Figure 20: Example Earned-Value plots included in monthly reports 86
 - Figure 21: Control Account Structure for HMF Project 87
 - Figure 22: Example of CESR accelerator Integration Acceptance Testing 87
 - Figure 23: Example of X-ray Station Integration Acceptance Testing 92
 - Figure 24: Example of X-ray Beamline Integration and Commissioning Procedure 93
 - Figure 25: Example of Operational Readiness Certification 94
- ### List of Tables
- Table 1: Science Requirements (SRs) of the HMF project 12
 - Table 2: Key Performance Parameters (KPPs) of the HMF project 13
 - Table 3: Total Project Scope Definition 21
 - Table 4: Total Project Costs at time of award 21
 - Table 5: Construction Project Schedule Narrative 22
 - Table 6: De-scoping Opportunities 24
 - Table 7: Example of evaluating cost impacts of de-scoping option SR4 34
 - Table 8: Examples of up-scoping opportunities 35
 - Table 9: Total Project Cost - Construction and Contingency - defined at award 36
 - Table 10: Contingency Budget and three types of Risk Exposure defined at award 36
 - Table 11: HMF Cost Estimating Methodology 38
 - Table 12: Non-routine Risk Exposure defined at award 39
 - Table 13: Routine Risk Exposure defined at time of award 40
 - Table 14: Probability and Contingency Rate table for Routine Risks 41
 - Table 15: Contingency held for Cost Variations, defined at time of award 41
 - Table 16: Funding Profile for HMF Project at award 41
 - Table 17: Description of the five largest external project constraints 43
 - Table 18: Risk management processes for routine risks and uncertain risks 45
 - Table 19: Risk management processes for non-routine risks and discrete risk events 49
 - Table 20: Risk Exposure quantities and how they are modeled in HMF Sim 50
 - Table 21: Components of the HMF cost-schedule model 51
 - Table 22: Contingency Management Plan elements 66
 - Table 23: Custom fields added to Master Schedule for risk and contingency tracking 67
 - Table 24: Science Requirement scope option dependencies on major equipment packages 69
 - Table 25: Definitions and Reporting of Contingency Use 74
 - Table 26: TPC, BAC, and CFB quantities tracked and reported on Change Request forms 77
 - Table 27: Change Control Matrix 80
 - Table 28: Integration Tasks and WBS Categories 89



Report History and Report Calendar

Year	Month	Date/Status	Report Type	Author	Reviewers	Comments
2021	January	1/15/21	RAEC	J. Brock	E. Fontes, J. Brock	Final Review
2021	February	2/22/21	RAEC	J. Brock	E. Fontes, J. Brock	Final Review
2021	March	3/22/21	RAEC	J. Brock	E. Fontes, J. Brock	Final Review
2021	April	4/22/21	RAEC	J. Brock	E. Fontes, J. Brock	Final Review
2021	May	5/22/21	RAEC	J. Brock	E. Fontes, J. Brock	Final Review
2021	June	6/22/21	RAEC	J. Brock	E. Fontes, J. Brock	Final Review
2021	July	7/22/21	RAEC	J. Brock	E. Fontes, J. Brock	Final Review
2021	August	8/22/21	RAEC	J. Brock	E. Fontes, J. Brock	Final Review

